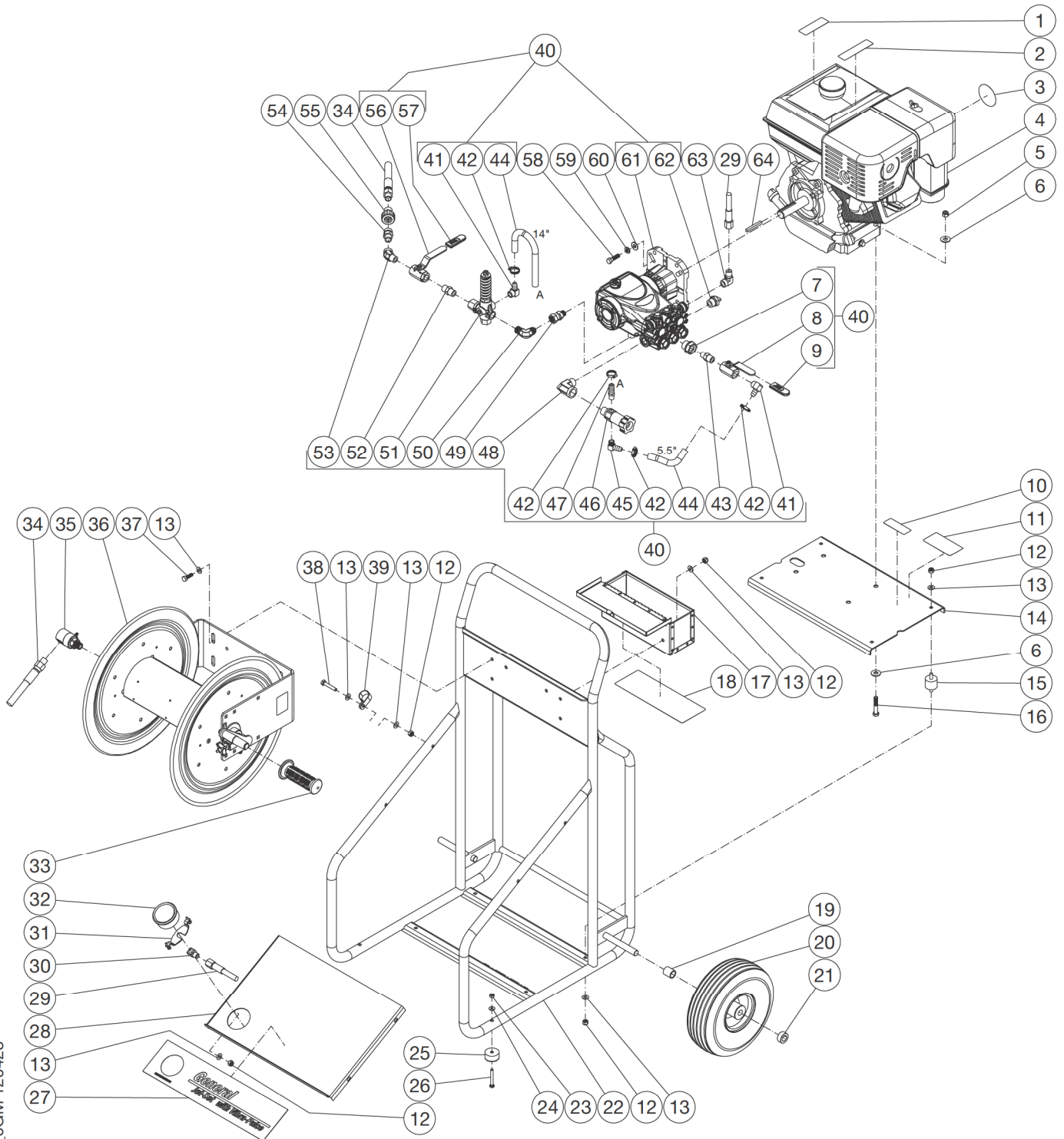


# UNIT ASSEMBLY JM-2900

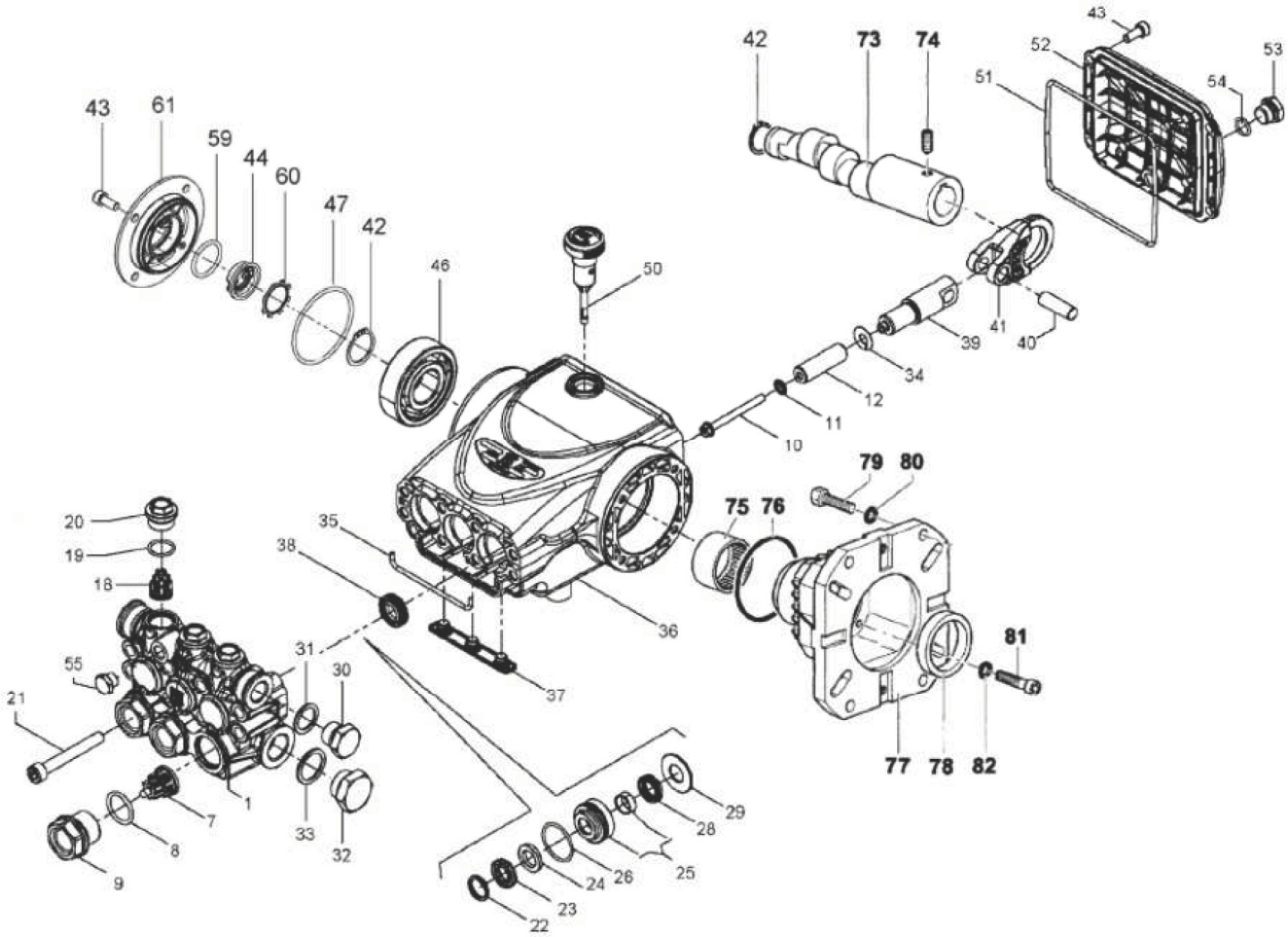


JM-2900-0GH\_OGM 120423

UNIT ASSEMBLY								
ITEM	TITLE	PART #	QTY		ITEM	TITLE	PART #	QTY
1	DECAL - RISK OF FIRE (SEE JM71-0002)	N/A	1		33	HANDLE GRIP	JM7-0059	1
2	DECAL - RISK OF BURNS (SEE JM71-0002)	N/A	1		34	HIGH PRESSURE HOSE	JM15-0312	1
3	DECAL - REWIND GPC	N/A	1		35	3/8" SWIVEL	JM24-0362	1
4	ENGINE - HONDA	JM1-0086	1		36	HOSE REEL	JM50-0221	1
-	ENGINE - MITM	JM1-0199	1		37	BOLT	JM27-0067	5
5	LOCKNUT	JM30-0159	4		38	BOLT	JM27-0070	4
6	WASHER	JM28-0023	8		39	CLIP	JM33-0291	1
7	VALVE CAP	JM46-1427	1		40	PUMP W/ EXTERNAL BYPASS	JM851-0427	1
8	BALL VALVE	JM22-0494	1		41	ELBOW	JM23-0050	2
9	HANDLE GRIP	JM7-0227	1		42	HOSE CLAMP	JM42-0011	4
10	DECAL - PROP 65	N/A	1		43	NIPPLE	JM24-0146	1
11	DECAL - SILVER STICKER	N/A	1		44	HOSE *(TWO FEET REQUIRED)	JM15-0007	1
12	LOCKNUT	JM30-0157	17		45	ELBOW	JM23-0119	1
13	WASHER	JM28-0003	26		46	FILTER	JM19-0207	1
14	ISOLATION PLATE	JM5-0308A64	1		47	HOSE BARB	JM23-0120	1
15	ISOLATOR	JM14-0097	4		48	ELBOW	JM24-0006	1
16	BOLT	JM27-0121	4		49	SWIVEL	JM24-0037	1
17	COMPONENT TOOL BOX	JM20-1213A64	1		50	ELBOW	JM24-0092	1
18	DECAL - WARNING/OPERATION (SEE JM71-0002)	N/A	1		51	UNLOADER	JM8-0634	1
19	SPACER	JM62-0188	2		52	NIPPLE	JM24-0010	1
20	WHEEL	JM14-0130	2		53	ELBOW	JM24-0042	1
21	COLLAR	JM33-0351	2		54	SCREW NIPPLE	JM23-0493	1
22	FRAME	JM5-0303A64	1		55	SCREW COUPLER	JM23-0490	1
23	LOCKNUT	JM30-0155	2		56	BALL VALVE	JM22-0461	1
24	WASHER	JM28-0002	2		57	HANDLE GRIP	JM7-0226	1
25	ISOLATOR	JM14-0069	2		58	BOLT	JM27-0118	4
26	BOLT	JM27-0020	2		59	LOCKWASHER	JM29-0008	4
27	DECAL - MARKETING	N/A	1		60	WASHER	JM28-0022	4
28	GAUGE PANEL	JM20-1217A64	1		61	PUMP	JM3-0467	1
29	HIGH PRESSURE HOSE	JM15-0309	1		62	RELIEF VALVE	JM22-0005	1
30	ELBOW	JM23-0014	1		63	ELBOW	JM24-0004	1
31	U CLAMP	JM13-0211	1		64	KEY	JM43-0078	1
32	PRESSURE GAUGE	JM22-0465	1		-	DECAL SET	JM71-0002	1

\*MUST ORDER IN ONE FOOT LENGTHS

# PUMP ASSEMBLY



PUMP ASSEMBLY							
ITEM	DESCRIPTION	PART #	QTY	ITEM	DESCRIPTION	PART #	QTY
1	MANIFOLD	N/A	1	39	PISTON GUIDE	JM46-1731	1
7	VALVE ASSEMBLY	JM70-0693	3	40	PISTON PIN	JM43-0079	3
8	O-RING (SEE KIT JM70-0694)	JM25-0745	3	41	CONNECTING ROD	JM46-1730	3
9	VALVE CAP (SEE KIT JM70-0694)	JM39-0071	3	42	STOP RING	JM46-0104	2
10	PLUNGER BOLT	JM27-0907	3	43	SCREW	JM27-8401	12
11	WASHER	JM28-0071	3	44	OIL LEVEL INDICATOR	JM46-1725	1
12	PLUNGER	JM46-1881	3	46	BEARING	JM48-0093	1
18	VALVE ASSEMBLY	JM70-0693	3	47	O-RING	JM25-0158	1
19	O-RING (SEE KIT JM70-0694)	JM25-0159	3	50	OIL DIPSTICK	JM46-1727	1
20	OUTLET VALVE CAP (SEE KIT JM70-0694)	JM46-1882	3	51	O-RING	JM25-0713	1
21	SCREW	JM27-8439	8	52	REAR COVER	JM46-1729	1
22	HEAD RING (SEE KIT JM70-0755 OR JM70-0758)	JM46-1883	3	53	PLUG	JM39-0017	1
23	PACKING (SEE KIT JM70-0755 OR JM70-0758)	JM46-1884	3	54	O-RING	JM25-0310	1
24	ANTI-EXT. RING (SEE KIT JM70-0755 OR JM70-0758)	SEE KIT	3	55	PLUG	JM39-0032	1
25	INTERMED. RING (SEE KIT JM70-0755)	JM46-1886	3	59	O-RING	JM25-0743	1
26	O-RING (SEE KIT JM70-0755 OR JM70-0758)	JM25-0744	3	60	STOP RING	JM46-1726	1
28	SEAL (SEE KIT JM70-0755 OR JM70-0758)	JM26-0445	3	61	SIDE COVER	JM46-1724	1
29	SUPPORT RING (SEE KIT JM70-0755)	JM28-1071	3	73	CRANKSHAFT	N/A	1
30	PLUG	JM39-0018	1	74	SET SCREW	JM27-1412	1
31	GASKET	JM28-0079	1	75	NEEDLE BEARING	JM48-0040	1
32	PLUG	JM39-0019	1	76	O-RING	JM25-0060	1
33	GASKET	JM46-1402	1	77	FLANGE	JM38-0038	1
34	WASHER	JM28-0070	3	78	OIL SEAL	JM26-0415	1
35	GASKET	JM26-0416	1	79	SCREW	JM46-0575	4
36	CRANKCASE	JM46-1733	1	80	WASHER	N/A	4
37	DRIP COVER	JM46-1734	1	81	SCREW	JM27-8404	4
38	OIL SEA (SEE KIT JM70-0695)	JM26-0446	3	82	WASHER	JM28-0072	4

REPLACEMENT KITS				
KIT#	DESCRIPTION	ITEMS	# OF ASSEMBLIES	# OF CYLINDERS
JM70-0693	VALVE	7, 18	6	3
JM70-0694	VALVE PLUG	8, 9, 19, 20	6	3
JM70-0695	OIL SEAL	38	3	3
JM70-0755	HOT PACK	22, 23, 24, 25, 26, 28, 29	1	1
JM70-0758	PACKINGS	22, 23, 24, 26, 28	3	3