

JM-1450™ Electric Water Jet

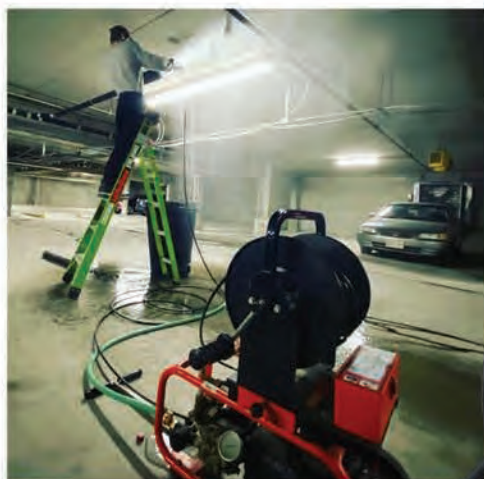
Compact! Portable! Powerful!



Scan to see webpage

The powerful JM-1450 electric water jet gives you as much pressure as you can get from an electric jet. It generates 1500 psi at 1.7 gallons per minute, yet only pulls 13 amps. It's powered by a 1-1/2 hp dual capacitor enclosed motor.

The JM-1450 features Vibra-pulse® on demand to help the hose slide around tight bends in small lines. This unique feature allows the flow rate to remain the same whether Vibra-pulse is on or off.



“ We ran the JM-1450 hose from the floor drain to the stack – then to the floor below, then cleanly repeated the process. Later, rinse and repeat! ”

Gregg D'Attili, Art Plumbing

Slide-Out Handle

Convenient handle and eight-inch wheels make it easier to roll the machine to and from the job. The reel detaches in seconds to make the jet more portable.



Key Features

- As much power as you can get from an electric jet.
- Generates 1500 psi at 1.7 gpm, yet pulls only 13 amps.
- Flow rate to remain the same whether Vibra-pulse is on or off.
- Compact and portable, hose reel removes in seconds.

The JM-1450 is compact and portable. With an overall height of 31", the machine fits easily in the limited storage space of a contractor's truck. Need to be more compact? Simply remove the easily detachable hose reel and the height drops to just 14". The telescoping handle makes it easier to roll the machine to and from the job site.

A removable 150 ft. capacity hose reel with drag brake and swivel is mounted on a heavy duty frame with two 8" semi-pneumatic tires.



Vibra-pulse®

This is what separates General's Jet-Set from ordinary pressure washers. Vibra-pulse breaks the initial tension between the surface of the hose and the walls of the pipe, helping the hose slide around tight bends and propel itself farther down the line. Vibra-pulse increases the cleaning power of electric jets, and is particularly useful in jetting around bends in small drain lines.