

Flexi-Router 100[®]

The Next Generation Flexible-Shaft Drain Cleaner

General Pipe Cleaners redefines high-speed, flexible-shaft technology with the Flexi-Router[®] 100 drain cleaner – the next-generation flexible-shaft drain cleaning machine! We've added an integral motor, stronger shaft, and unique ClogChopper cutters to a durable metal, easily maneuverable frame.

The stronger, stiffer shaft is flexible enough to get through 2" lines, yet strong enough to cut roots in 4" drain lines up to 75 feet down the line. It's powered by an integral variable speed motor that lets you adjust the speed from zero to 2200 rpm. With the foot pedal, you have both hands free to safely guide the flexible shaft into the line. You can use the Flexi-Router simultaneously with your sewer inspection

camera system to pinpoint trouble spots in the line and instantly view your results. The durable metal frame includes 10" wheels and a folding handle to make it easier to get the machine smoothly to and from the job. A safety slip clutch helps protect the flexible shaft. But if you ever do get into trouble, the shaft is field repairable.



“ We’re using the Flexi-Router more than our conventional cable machines. It handles most drain cleaning troubles – from root problems to grease and sludge stoppages. ”

Seth Mikulin, SureFlo Sewer and Drain Cleaning

Key Features

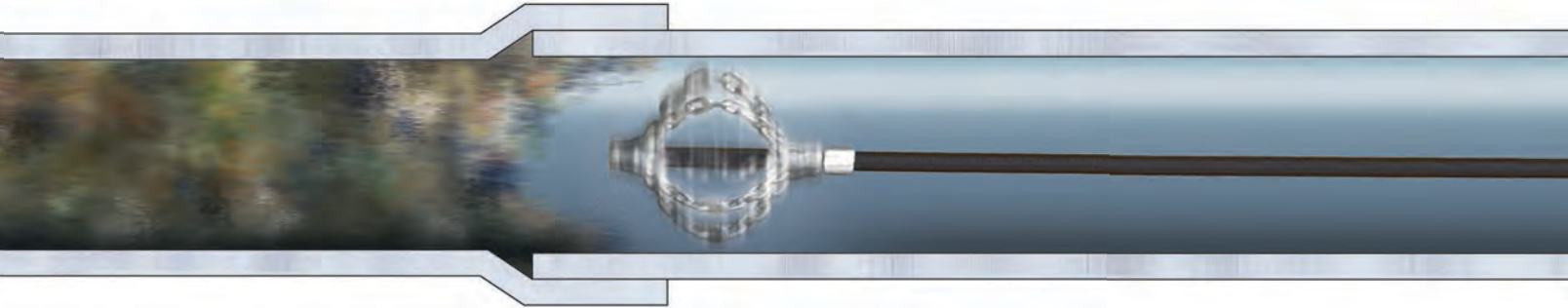
- Integral variable speed motor – from zero to 2200 RPM.
- Stronger, stiffer flexible shaft and durable sheath.
- Two-part cleaning array combines ClogChopper[®] with carbide-tipped chain cutters.
- Foot pedal frees hands to guide the shaft.
- General’s flexible shaft is field repairable.



Scan to see webpage

General's innovative, two-part cleaning array combines the unique ClogChopper® with Carbide-Tipped Chain Cutters to make a formidable combination. ClogChoppers rip through tough stoppages with six self-sharpening blades that dig into

encrusted debris and root masses, easily grinding up stubborn clogs. The spherical design maneuvers around tight bends and traps. Together, they are capable of boring through tough stoppages and scale, shredding obstructions, and scouring pipe walls clean.



What is Flexible Shaft Technology?

Flexible-shaft technology is the next big thing in our industry. Flexible-shaft sewer machines utilize a swiftly rotating wire coil, much like a speedometer cable. The flexible shaft is safely protected inside a sheath so it's easy to handle – no spinning drums.

Flexible-shaft technology is faster and more thorough than traditional drain cleaners. The flexible shaft spins more than 10 times faster than drum machines. At speeds of 2000 RPM or more, the chain cutters quickly grind up stoppages and scour the walls of the pipe. And you can use your camera system to give it pinpoint accuracy.

ClogChopper® with Carbide-Tipped Chain Cutter

General's innovative, two-part cleaning array combines the unique ClogChopper® with Carbide-Tipped Chain Cutters to make a formidable combination. ClogChoppers rip through tough stoppages with six self-sharpening blades that dig into encrusted debris and root masses, easily grinding up stubborn clogs. The spherical design maneuvers around tight bends and traps. Together, they are capable of boring through tough stoppages and scale, shredding obstructions, and scouring pipe walls clean. Also available for use with Non-Carbide Chain Cutters.



FR-1-1/2CG
1-1/2" ClogChopper Cutter
for Flexi-Rooter



FR-2CK
2" Chain Cutter – Double Chain
For PVC and Soft Stoppages



FR-2HDCK
2" Heavy-Duty Carbide Tipped Chain
Cutter – Double Chain –
For Roots and Descaling



FR-3-4CK
3" – 4" Chain Cutter – Triple Chain –
For PVC and Soft Stoppages



FR-3-4HDCK
3" – 4" Heavy Duty Carbide
Tipped Chain Cutter – Triple Chain –
For Roots and Descaling



FR-3TAZ
3" Circular
Carbide Tipped Chain



FR-4TAZ
4" Circular
Carbide Tipped Chain