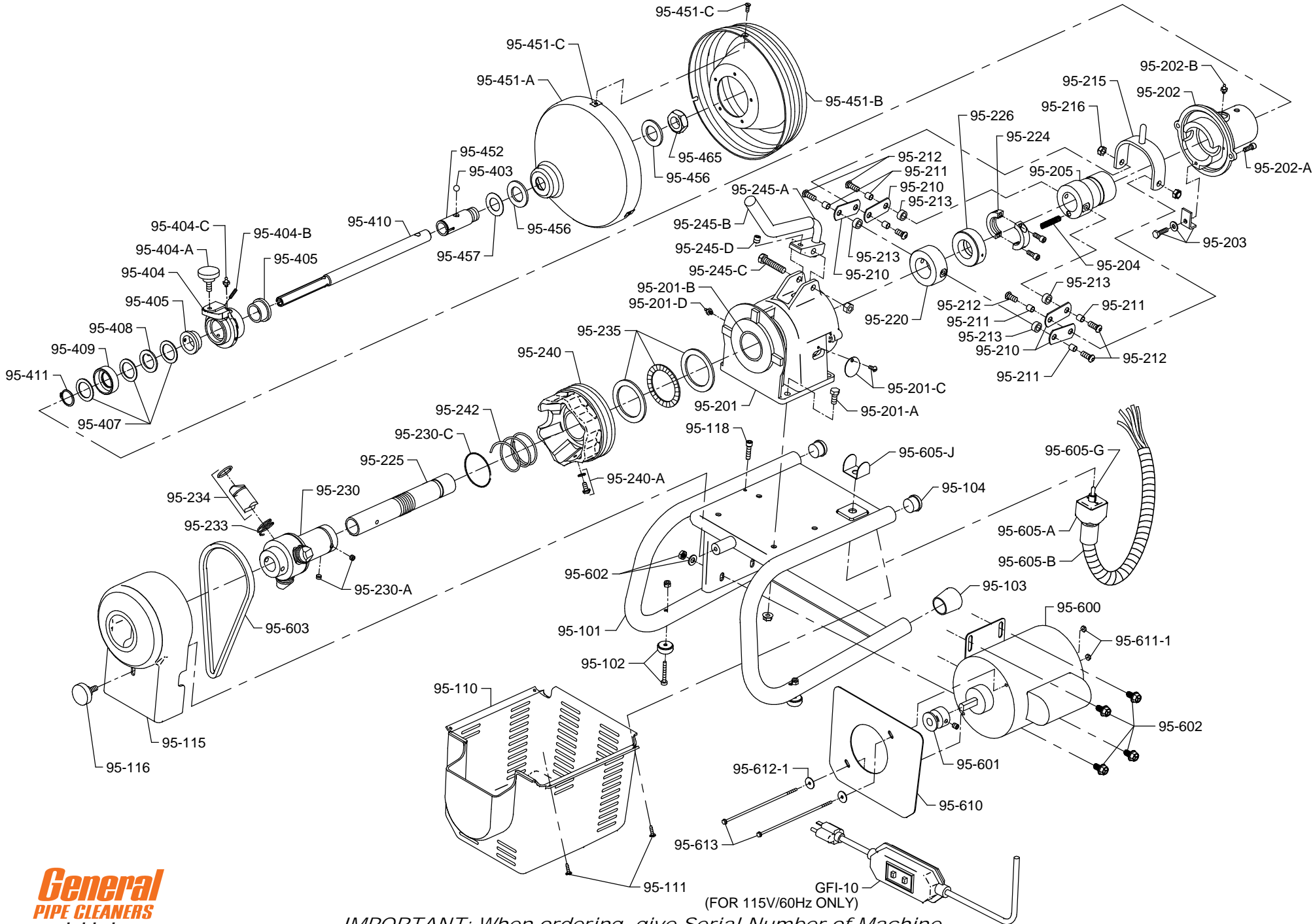


I-95 PARTS LIST

ITEM NO.	CATALOG NO.	DESCRIPTION	ITEM NO.	CATALOG NO.	DESCRIPTION
182100	95-100	Frame Complete	182045	95-245-C	Bolt & Nut
182105	95-101	Frame Only	182055	95-245-D	Handle Adjustment Screw
182110	95-102	Rubber Feet, Bolts, Nuts & Washers (2)	182010	95-25-O	Small Container (for 5/16" Cables)
182115	95-103	Rubber Leg Tips (2)	182295	95-401	Small Container Shell & Spindle
182120	95-104	End Plugs (2)	182300	95-403	Ball Bearing
182125	95-106	Cutter Bag	182305	95-404	Mounting Collar w/Knob
182135	95-110	Motor Guard	182310	95-404-A	Knob
182140	95-111	Screws for Motor Guard (4)	182315	95-404-B	Set Screws (3)
182145	95-115	Belt Guard	182320	95-404-C	Grease Fitting
182150	95-116	Belt Guard Retaining Knob	182325	95-405	Flange Bearing Set (2)
182160	95-118	Belt Tension Adjustment Screw	182330	95-407	Fiber Washers (3)
182165	95-200	Chuck Assembly	182335	95-408	Brake Disc
182170	95-201	Chuck Housing	182340	95-409	Spacer
182175	95-201-A	Chuck Housing Bolts (4)	182345	95-410	Drum Jaw
199990	95-201-B	Chuck Housing Bushing	182350	95-411	Snap Ring
182176	95-201-C	Access Panel w/Screw	182020	95-35-O	Large Container (for 3/8" Cables)
182177	95-201-D	Grease Fitting	182355	95-451	Large Conatiner Shell
182180	95-202	Rear Housing	182360	95-451-A	Container Front
182185	95-202-A	Rear Housing Bolts (2)	182365	95-451-B	Container Back
182177	95-202-B	Grease Fitting	182370	95-451-C	Screws & Clips (3)
182190	95-203	Brake Stop, Screw & Washer	182375	95-452	Spindle for Large Container
182195	95-204	Brake Spring	182380	95-456	Washer (2)
182200	95-205	Brake Sleeve	182381	95-457	Thrust Bearing Race
182205	95-210	Linkage (4)	182385	95-465	Nut
182210	95-211	Sleeves (6)	182390	95-600	1/3 hp Motor w/Reverse Switch & GFCI
182215	95-212	Button Head Cap Screw (6)	182395	95-601	Motor Pulley w/Set Screw
182220	95-213	Linkage Spacers (4)	182400	95-602	Mounting Bolts, Nuts & Washers
182225	95-215	Yoke	182405	95-603	Notched V-Belt
182230	95-216	Self Locking Nuts (2)	136010	GFI-10	GFCI w/10 ft. Power Cord
182235	95-220	Chuck Slide	182415	95-605	Reverse Switch Assembly
182240	95-224	Threaded Collar w/Screws	182420	95-605-A	Terminal Boot
182245	95-225	Chuck Shaft	182425	95-605-B	Wire Loom
182250	95-226	Ball Bearing	182430	95-605-C	Cord Clamp & Screw
182255	95-230	Chuck Body	182435	95-605-G	Reverse Switch Only
182260	95-230-A	Set Screws (2)	182440	95-605-H	Toggle Boot
182265	95-230-C	Jaw Locating Ring	182445	95-605-J	Toggle Guard
182270	95-233	Jaw Springs (3)	182450	95-610	Baffle
182275	95-234	Chuck Jaws w/Rings (3)	182455	95-611-1	Baffle Nuts (2)
182280	95-235	Thrust Bearing & Races	182460	95-612	Baffle Spacer Washers (4)
182285	95-240	Chuck Cone	182460	95-612-1	Baffle Spacer Washers (2)
182290	95-240-A	Limit Screw & Lock Washer	182461	95-613	Baffle Bolts (2)
182287	95-242	Return Spring	182060	95-RGH	Rear Guide Hose
182015	95-245	Handle Assembly	140840	BNDT	Band-It Splashguard
182025	95-245-A	Handle Only			
182035	95-245-B	Rubber Grip			

I-95 SCHEMATIC DIAGRAM



IMPORTANT: When ordering, give Serial Number of Machine.