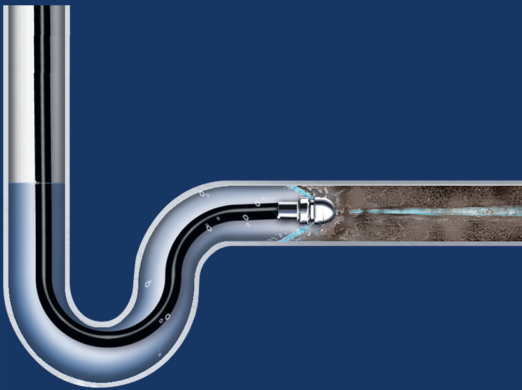


Jet-Set[®]

Slice through grease, sludge, sand and ice.



General's water jets are ideal for clearing grease, sand and ice from clogged drain lines. They use a stream of high pressure water that hits the stoppage and flushes it away. The thrust of the nozzle drives the hose down the line and gives you wall to wall cleaning action. General's Jet-Set[®] gives you new weapons to use on some of your toughest stoppages.

General
PIPE CLEANERS
www.drainbrain.com

The toughest tools down the line.™

JM-1000 Electric Jet

Mini-Jet – Mini-Price

Easily clear clogs from small drain lines. The lightweight, compact JM-1000 Mini-Jet gives you 1500 psi of cleaning power, yet weighs just 23 lbs. Clear grease, sand and ice from 1-1/2" to 3" lines up to 50 feet long. The pump and motor are safely contained in a rugged, diamond plate case that can handle abuse in the field.

The JM-1000 Mini-Jet generates 1500 psi at 1.4 gpm, yet pulls only 13 amps. Pulse helps the hose slide around tight bends and farther down the line for wall to wall cleaning action. A water sensor "senses" the moving water and automatically shuts off the motor if water isn't flowing through the pump to protect the unit from damage. And rubber feet under the case protect kitchen counter tops.

Pound for pound and dollar for dollar, the Mini-Jet is a great (and small) investment.



The lightweight, compact Mini-Jet weighs just 23 lbs. so it's small enough to store conveniently in your truck

JM-1000 Specifications:

Pump: Triplex w/Pulse

Pressure: 1500 psi

Flow: 1.4 gpm

Motor: 1.2 hp 13 amp w/GFCI

Max. Capacity: 50 ft. x 1/8" hose

Weight: 23 lbs. (10 kg)

Dimensions: 24" L x 10.5" W x 11" H
(61 cm x 27 cm x 28 cm)

JM-1450 Electric Jet

Compact! Portable! Powerful!

The powerful JM-1450 electric water jet gives you as much pressure as you can get from an electric jet. It generates 1500 psi at 1.7 gallons per minute, yet the 1-1/2 hp motor pulls only 13 amps.

Vibra-pulse® on demand helps the hose slide around tight bends in small lines. This unique feature allows the flow rate to remain the same whether Vibra-pulse is on or off.

The JM-1450 is compact and portable. With an overall height of 34", the machine fits easily in the limited storage space of a contractor's truck. Need to be more compact? Simply remove the easily detachable hose reel and the height drops to just 14". The telescoping handle makes it easier to roll the machine to and from the job site.

A removable 150 ft. capacity hose reel with reel brake is mounted on a heavy duty frame with two 8" semi-pneumatic tires. Complete with tool box. An optional spray wand is available.



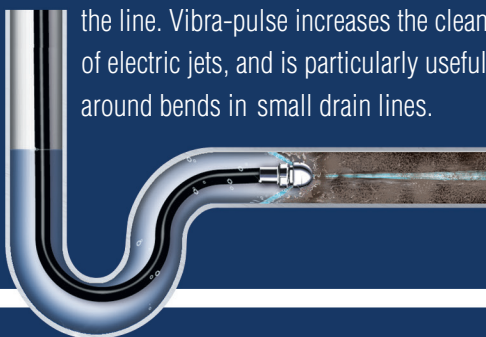
The hose reel detaches in seconds, to make the jet more compact and portable.



A convenient slide-out handle and eight inch wheels make it easy to roll the machine to and from the job.

Vibra-pulse®

This is what separates General's Jet-Set from ordinary pressure washers. Vibra-pulse breaks the initial tension between the surface of the hose and the walls of the pipe, helping the hose slide around tight bends and propels itself farther down the line. Vibra-pulse increases the cleaning power of electric jets, and is particularly useful in jetting around bends in small drain lines.



JM-1450 Specifications:

Pump: Triplex w/Vibra-pulse®

Pressure: 1500 psi

Flow: 1.7 gpm

Motor: 1-1/2 hp 13 amp w/GFCI

Hose Reel: Swivel, drag brake, and reel lock, 150 ft. x 1/4" hose capacity

Weight: 111 lbs. (50 kg)

Dimensions: 28" L x 15" W x 34" H (14-1/2" H w/o Reel)
(71 cm x 38 cm x 86 cm)

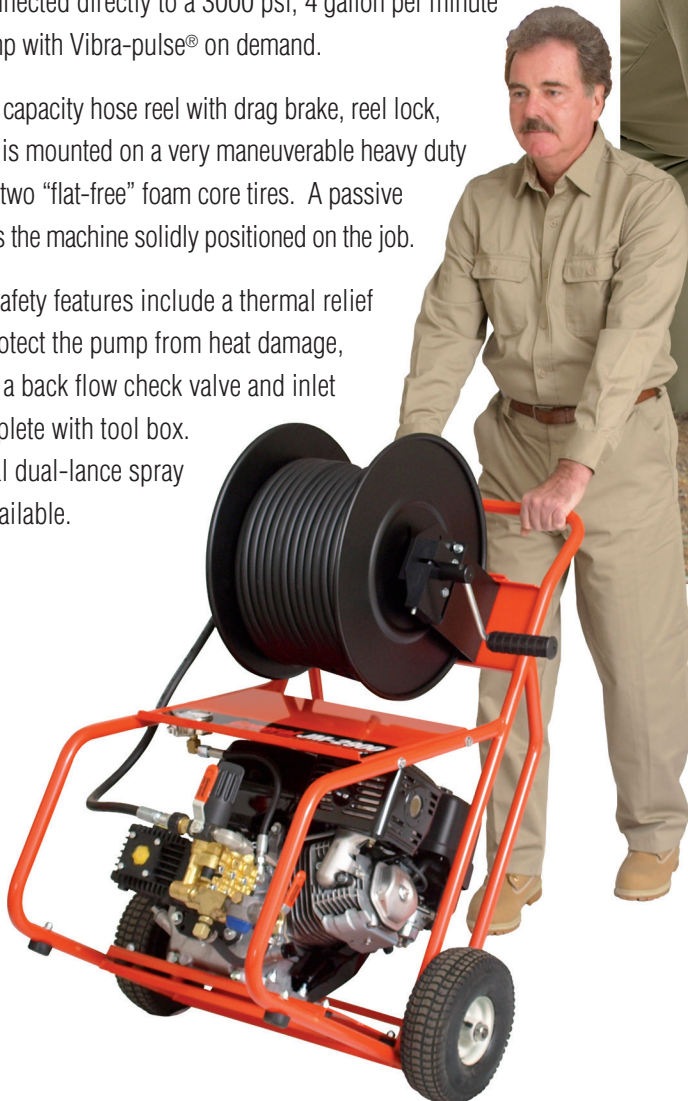
JM-2900 Gas Jet

Big machine power at a bargain price.

The JM-2900 is an economical alternative to larger gas jets. It's lighter and more maneuverable, yet maintains the same pressure and flow rate of its big brothers. It's driven by a 389 cc engine connected directly to a 3000 psi, 4 gallon per minute triplex pump with Vibra-pulse® on demand.

The 200 ft. capacity hose reel with drag brake, reel lock, and swivel is mounted on a very maneuverable heavy duty frame with two "flat-free" foam core tires. A passive brake keeps the machine solidly positioned on the job.

Standard safety features include a thermal relief valve to protect the pump from heat damage, along with a back flow check valve and inlet filter. Complete with tool box. An optional dual-lance spray wand is available.



JM-2900 Specifications:

Pump: Triplex w/Vibra-pulse®

Pressure: 3000 psi

Flow: 4 gpm

Engine: 389 cc w/Low oil shut off

Hose Reel: Swivel, drag brake, and reel lock, 200 ft. x 3/8" hose capacity

Weight: 180 lbs. (82 kg)

Dimensions: 28" L x 28" W x 43" H (71 cm x 71 cm x 109 cm)

JM-3000 Gas Jet

Solid performance in the toughest conditions.

Built to take heavy use and abuse, the powerful JM-3000 is great for clearing large lines and long runs. A heavy duty 3000 psi, 4 gpm triplex pump with Vibra-pulse® on demand is driven by a reliable 389 cc engine with electric start through a 2 to 1 gear reducer to extend the life of the pump.

The JM-3000 is well balanced for easy handling. With little effort, you can tip the machine back on its rear wheels to more easily maneuver it into position. A removable 300 ft. capacity hose reel with drag brake, reel lock, and swivel is mounted on the heavy duty frame with four 13" "flat-free" foam core tires. A wheel brake keeps the machine solidly positioned on the job.

Standard safety features include a thermal relief valve to protect the pump from heat damage, along with a back flow check valve and inlet filter. Complete with tool box and dual-lance spray wand.



JM-3000 Specifications:

Pump: Triplex w/Vibra-pulse®

Pressure: 3000 psi

Flow: 4 gpm

Engine: 389 cc w/Low oil shut off, electric start, and gear reducer

Hose Reel: Removable, swivel, drag brake, and reel lock, 300 ft. x 3/8" hose capacity

Weight: 291 lbs. (132 kg)

Dimensions: 43" L x 29" W x 49" H (109 cm x 74 cm x 124 cm)

JM-3055 Gas Jet

The most flow you can get without a holding tank.

The JM-3055 has the power to clear your most stubborn stoppages, including grease, sand and ice. Its 3000 psi, 5.5 gpm triplex pump has the thrust to pull the hose down long runs, the pressure to cut through tough stoppages, and the flow to flush them away. In fact, the JM-3055 has the highest flow rate available without requiring a holding tank. It's driven by a 480 cc Briggs and Stratton Vanguard® engine with electric start. The pump features Vibra-pulse® on demand to help the hose slide around tight bends and down long runs.

The JM-3055 is well balanced so that with little effort, the machine can be tipped back on its rear wheels to more easily maneuver it into position. A removable 300 ft. capacity hose reel with drag brake, reel lock, and swivel is mounted on a heavy duty frame with four 13" "flat-free" foam core tires. A wheel brake keeps the machine solidly positioned on the job.

Standard safety features include a thermal relief valve to protect the pump from heat damage, along with a back flow check valve and inlet filter. Complete with tool box and dual-lance spray wand.



JM-3055 Specifications:

Pump: Triplex w/Vibra-pulse®

Pressure: 3000 psi

Flow: 5.5 gpm

Engine: 480 cc w/Low oil shut off, electric start, and gear reducer

Hose Reel: Removable, swivel, drag brake, and reel lock, 300 ft. x 3/8" hose capacity

Weight: 299 lbs. (135 kg)

Dimensions: 43" L x 29" W x 47" H (109 cm x 73 cm x 124 cm)

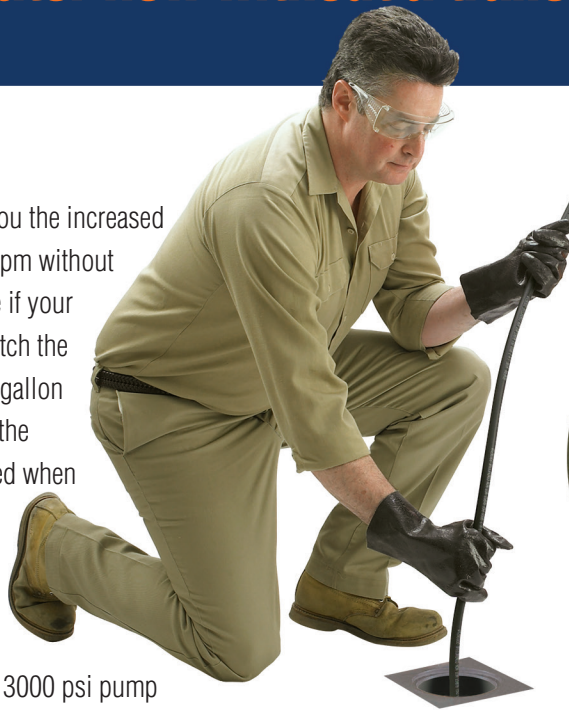
JM-3080 Gas Jet

Get high water flow without a trailer.

The JM-3080 gives you the increased cleaning power of 8 gpm without risking pump damage if your water supply can't match the pump demand. A 12 gallon buffer tank gives you the safety margin you need when using a high flow water jet to clear larger and more difficult lines.

A 614 cc engine with electric start drives a 3000 psi pump through a 2 to 1 gear reducer. The pump features Vibra-pulse® on demand, to help propel the hose on long runs and around tight bends.

Surprisingly agile for a machine of its size, the JM-3080 is precisely balanced so that with little effort, the machine can be tipped back on its rear wheels to more easily maneuver it into position. A removable 300 ft. capacity hose reel with drag brake, reel lock, and swivel is mounted on a heavy duty frame with four 13" "flat-free" foam core tires. A wheel brake keeps the machine solidly positioned on the job.



Standard safety features include a thermal relief valve to protect the pump from heat damage, along with a back flow check valve and inlet filter. Complete with tool box and dual-lance spray wand.

JM-3080 Specifications:

Pump: Triplex w/Vibra-pulse®

Pressure: 3000 psi

Flow: 8 gpm

Engine: 614 cc w/Low oil shut off, electric start, and gear reducer

Hose Reel: Removable, swivel, drag brake, and reel lock, 300 ft. x 3/8" hose capacity

Weight: 375 lbs. (170 kg)

Dimensions: 43" L x 29" W x 56" H (109 cm x 74 cm x 142 cm)

JM-2512 Typhoon™

Big cleaning power in a tough new package.



The JM-2512 Typhoon™ trailer jet is ideal for clearing big lines or remote jobs far from a water source. Twelve gallons of water pulsates down the line every minute at a powerful 2500 psi to blast lines clear of grease, sediment, and debris. The 200 gallon holding tank carries enough water to handle remote applications where access to water is limited.

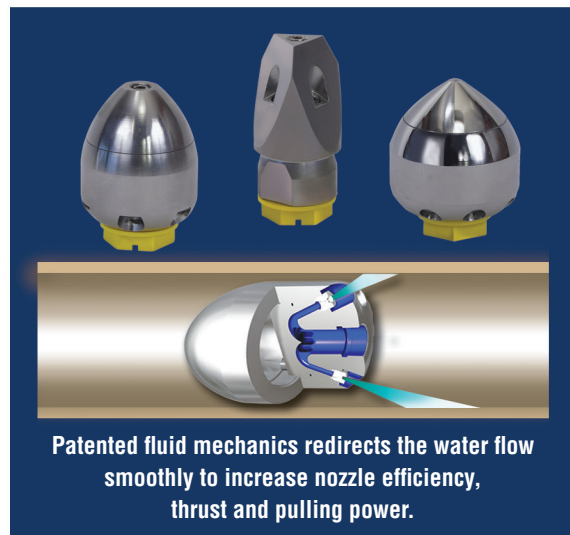
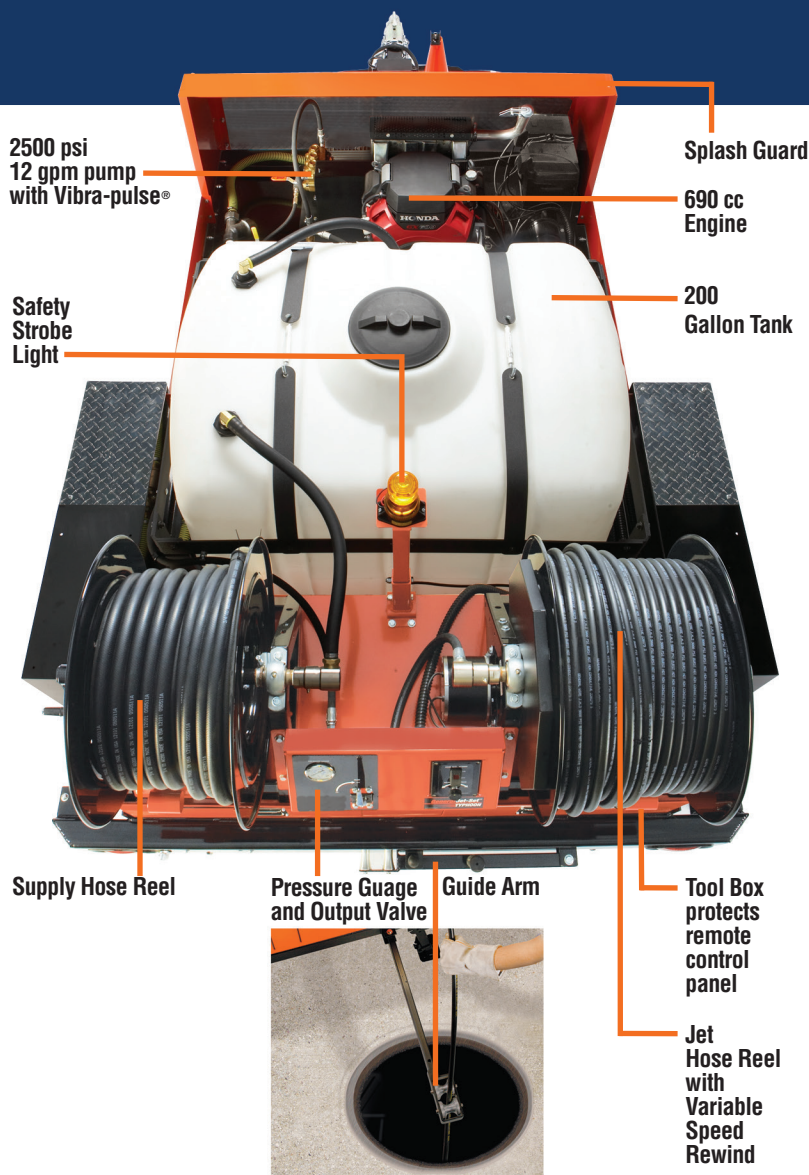
A 690 cc engine with electric start powers the 2500 psi, 12 gpm pump with Vibra-pulse® through a V-belt reducer. Two hose reels – an electric rewind jet hose reel with 400 ft. x 1/2" capacity featuring a variable speed controller, and a supply hose reel carrying 150 ft. x 3/4" hose – are mounted at the rear of the unit next to the pressure gauge and output valve. Engine controls, including an hour meter, are mounted within easy reach in the lockable tool box with slide action doors just below the reels.

The Typhoon is mounted on a heavy duty trailer rated for 3500 lbs. per axle with bearing buddies, and rides on 15" radial tires with modular wheels. A splash guard at the front protects the pump and engine from road debris. The body is protected by a durable powder-coated epoxy finish for added weather protection.

Standard safety features include electric brakes, safety strobe light, three safety cones with holder, rear fold down stabilizer jacks, and retractable guide arm. An anti-freeze system protects the unit from freeze damage. Complete with dual-lance spray wand.



JM-2512 Typhoon Specifications:	Engine: 690 cc w/Low oil shut off, electric start, and V-belt reducer
Pump: Triplex w/Vibra-pulse®	Tank Capacity: 200 Gallon
Pressure: 2500 psi	Jet Hose Reel: Electric variable speed rewind, swivel, 400 ft. x 1/2" hose capacity
Flow: 12 gpm	Supply Hose Reel: Manual, swivel, drag brake, and reel lock, 150 ft. x 3/4" capacity



High Performance Nozzles

General's High Performance Nozzles incorporate patented fluid mechanics that significantly increases the thrust, pulling power, and cleaning power of the nozzles without needing to increase the water flow or pressure. Other nozzles simply let the water churn around inside until it finds its way out the nearest orifice. High Performance Nozzles are custom machined to redirect the water through highly efficient inner surface channels directed toward each orifice. The nozzles have replaceable threaded inserts at each orifice, so when the nozzle wears, you only have to replace the inserts, not the whole nozzle. A set of inserts are a fraction of the cost of a replacement nozzle.

See additional nozzle options on page 11.



Safety Features: Electric brakes, safety strobe light, three safety cones with holder, rear fold down stabilizer jacks, and retractable guide arm

Weight: 1900 lbs. Empty; 3300 lbs. Loaded

Trailer Dimensions: 153" L x 82" W x 65" H (388 cm x 208 cm x 165 cm)

Skid Mount Dimensions: 106" L x 64" W x 46.5" H (269 cm x 162.5 cm x 118 cm)

Jet-Set Accessories



CM-300 Cart-Reel

The optional Cart-Reel™ is a must for professionals. It lets you use the power of the gas jet in buildings and confined spaces where exhaust fumes could be hazardous, while the gas jet stays safely outside. The Cart-Reel comes with two “flat-free” foam core tires, 300 ft capacity hose reel, reel brake, gauge, and a shut-off valve.

HM-200-W Handy-Reel with Foot Pedal

For use with any jet, the compact 200 ft. capacity Handy-Reel can be attached to a gas jet so you can use the power of the gas jet inside a building. Or it can be taken up on a roof to clear vents while your jet sits securely on the ground. The foot pedal gives you added safety. Water flows when you step on the pedal and stops when you lift your foot, so you have both hands free at all times to control the hose. The foot pedal is also available separately.



Spray Wands

Get a spray wand and use your jet for high pressure washing and cleaning applications. Spray wands are made from durable components. The triggers have a light touch, yet can with stand rough usage. The wands are insulated and designed for use with a down stream soap injector. A variety of stainless steel nozzles are available.

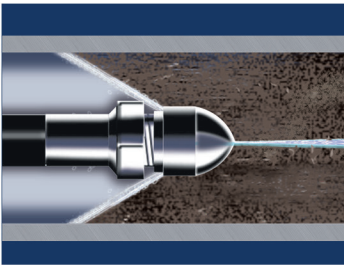


Jet-Set Nozzles and Hoses

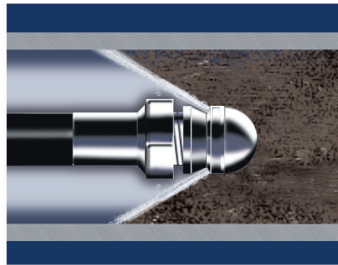
Nozzles

Whether you're up against grease, sand, or ice, there's a General nozzle that will cut through it. Some are designed for maximum penetrating power, some are designed to pressure wash the pipe

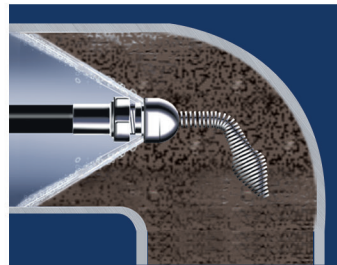
walls, and some are designed to go around sharp bends. All of General's nozzles are made of hardened stainless steel to last longer.



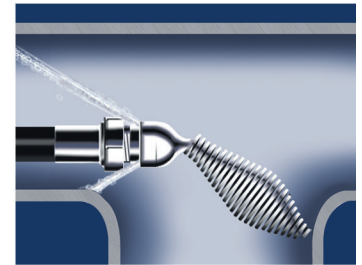
Powerful penetrating nozzle cuts through grease and ice.



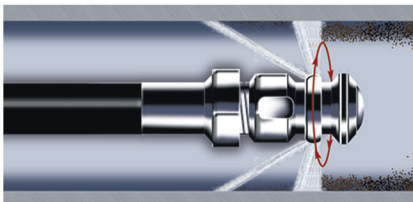
Wide spray flushing nozzle cleans inside of pipe thoroughly,



Spring Leader nozzle helps guide hose around tight bends and P-traps.



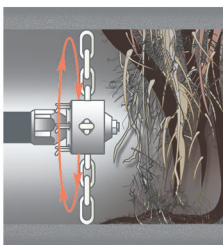
Downhead nozzle takes hose down Tee's and around difficult corners.



Rotary nozzles scour wall of pipe crystal clear.

Rotary Nozzles

Make sure you leave the lines crystal clear with General's rotary nozzles. The JN-RB heavy duty hardened stainless steel rotary nozzles have two 90 degree jets to scour the walls of the pipe, and two 35 degree jets to drive the hose down the line. The less expensive JN-RA hardened steel rotary nozzles have two 45 degree jets for combined thrust and cleaning action.



Chain Saw Nozzle

Rip through roots with the Chain Saw Nozzle. Lengths of chain can quickly and easily be switched for different diameter pipes. Spins at up to 10,000 RPM.

- 1/2" nozzle (shown here) works well in combination the 12 gpm Typhoon trailer jet to clear 4", 6", 8", and 10" lines.
- 3/8" nozzle is available in 4, 5.5, and 8 gpm models to clear 4", 6", and 8" lines.

Hoses



Tough high pressure jetting hose comes in a variety of lengths and diameters. Use the 1/2" ID hose for main lines and long runs at distances up to 400 ft. Use the 3/8" ID hose for clean outs, 4" through 8" floor drains, and septic lines at distances up to 300 ft. With the 1/4" ID hose, you can clear 2" through 4" lines up to 200 ft. away. And the Super-Flex™ 1/8" hose has the flexibility to get through 1-1/2" and 2" lines and bends up to 75 ft. down the line.

Jet-Set Specifications

	JM-1000 Electric Jet	JM-1450 Electric Jet	JM-2900 Gas Jet	JM-3000 Gas Jet	JM-3055 Gas Jet	JM-3080 Gas Jet	JM-2512 Trailer Jet
Weight (Without Hose)	23 lbs. 10 Kg	111 lbs. 50 kg	180 lbs. 82 kg	291 lbs. 132 kg	299 lbs. 135 kg	375 lbs. 170 kg	1900 lbs. (Empty) 3300 lbs. (Loaded)
Dimensions Length	24" 61 cm	28" 71 cm	28" 71 cm	43" 109 cm	43" 109 cm	43" 109 cm	153" 388 cm
Dimensions Width	10.5" 27 cm	15" 38 cm	28" 71 cm	29" 74 cm	29" 74 cm	29" 74 cm	82" 208 cm
Dimensions Height	11" 28 cm	34" 86 cm	42" 109 cm	49" 124 cm	47" 124 cm	56" 142 cm	65" 165 cm
Motor/Engine	1.2 hp	1.5 hp	389 cc	389 cc	480 cc	614 cc	690 cc
Electric Start	N/A	N/A	No	Yes	Yes	Yes	Yes
Pump	Triplex	Triplex	Triplex	Triplex	Triplex	Triplex	Triplex
Pressure Flow	1500 psi 1.4 gpm	1500 psi 1.7 gpm	3000 psi 4 gpm	3000 psi 4 gpm	3000 psi 5.5 gpm	3000 psi 8 gpm	2500 psi 12 gpm
Vibra-pulse®	Yes	Yes	Yes	Yes	Yes	Yes	Yes
Removable Hose Reel	No	Yes	No	Yes	Yes	Yes	No
Hose Reel Capacity	N/A	150 ft. x 1/4"	200 ft. x 3/8"	300 ft. x 3/8"	300 ft. x 3/8"	300 ft. x 3/8"	400 ft. x 1/2"
Inlet Filter	Yes	Yes	Yes	Yes	Yes	Yes	Yes
Backflow Check Valve	No	Yes	Yes	Yes	Yes	Yes	Yes
Thermal Relief Valve	No	Yes	Yes	Yes	Yes	Yes	Yes
Spray Wand & Chemical Injector	Optional	Optional	Optional	Standard	Standard	Standard	Standard
Metal Tool Box	Yes	Yes	Yes	Yes	Yes	Yes	Yes
Tires	N/A	Two Semi- Pneumatic	Two "Flat-Free" Foam Core	Four "Flat-Free" Foam Core	Four "Flat-Free" Foam Core	Four "Flat-Free" Foam Core	Two Radial

General
PIPE CLEANERS
www.drainbrain.com

General Wire Spring Co.
McKees Rocks, PA 15136 USA
800-245-6200 or 412-771-6300

