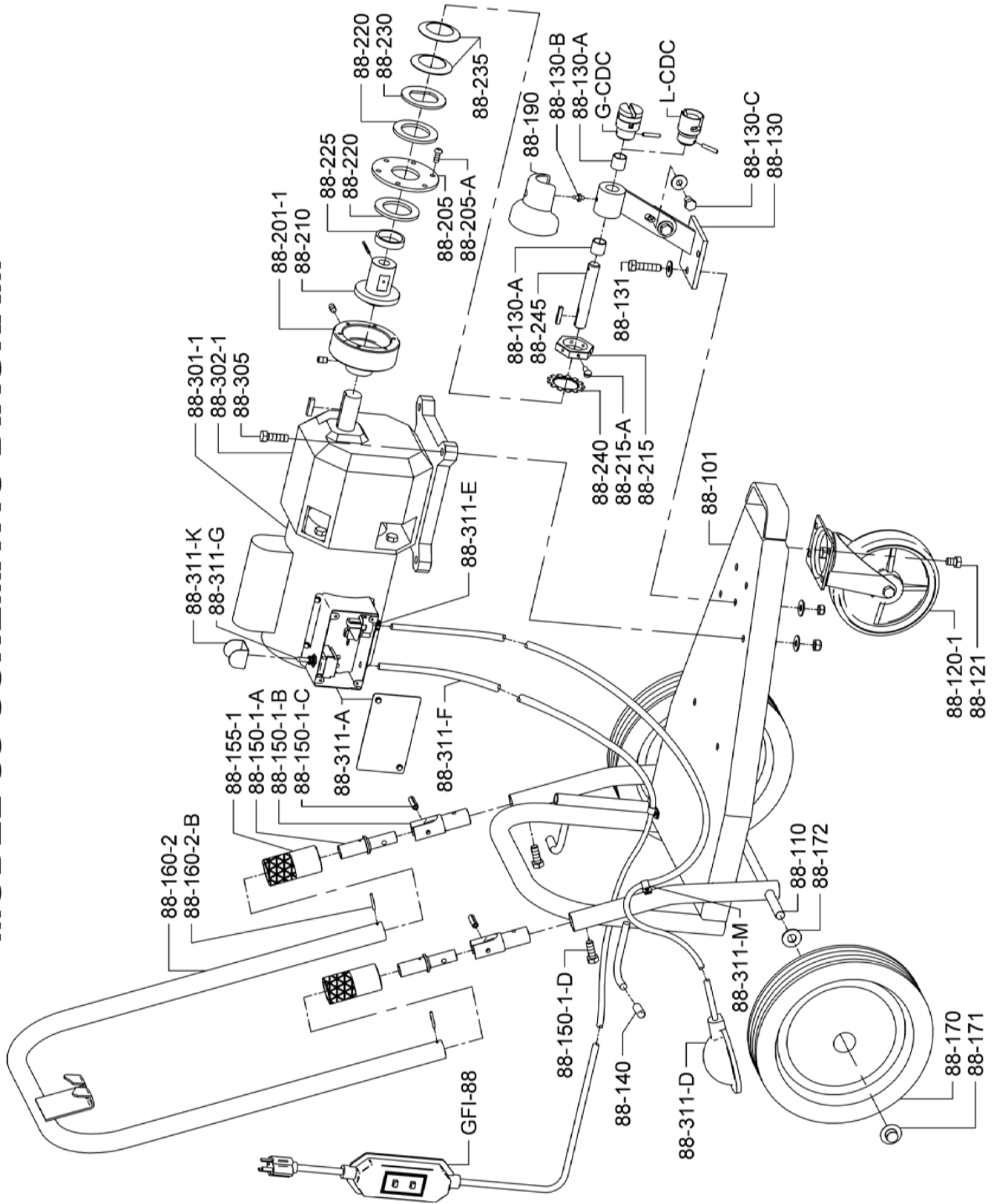


## MODEL 88 PARTS LIST

CAT. NO.	DESCRIPTION	CAT. NO.	DESCRIPTION
88-100	Frame Complete	88-225	Spacer Bushing
88-101	Frame Only	88-230	Fixed Plate
88-110	Axle	88-235	Spring Washer (2)
88-120	5" Caster	88-240	Locking Washer
88-121	Caster Bolts (4)	88-245	Clutch Shaft 5/8" w/Key
88-130	Front Bearing Post	88-301-1	Motor (3450 RPM)
88-130-A	Bushings (2)	88-301-2	1 hp Motor (3450 RPM)
88-130-B	Grease Fitting	88-302-1	Gear Head Only (3.5 to 1)
88-130-C	Post Adjusting Bolts & Washers (2)	88-302-A	Gear Head Vent Cap
88-131	Post Bolts, Nuts, & Washers (3)	88-302-1-A	Gear Head Vent Cap
88-140	Rubber Cord Wrap Tips (2)	88-303	Gear Head Mounting Bolts (4)
88-150-1	Handle Hinge Assembly	88-305	Motor Mounting Bolts, Nuts & Washers (4)
88-150-1-A	Hinge Top	88-311	Air Foot Switch & Reverse Switch Complete
88-150-1-B	Hinge Bottom	88-311-A	Box Only w/Cover & Screws
88-150-1-C	Hinge Roll Pins (2)	88-311-B	Foot Pedal & Hose
88-150-1-D	Handle Locking Sleeve Stop Screw	88-311-C	Hose Clamp
88-155-1	Handle Locking Sleeve	88-311-D	Foot Pedal Only
88-160-2	Handle w/Pedal Holder	88-311-E	Power Switch Diaphragm
88-160-2-B	Handle Roll Pin	88-311-F	Air Hose Only (11 ft.)
88-170	10" Wheel	88-311-G	Reverse Switch
88-171	Hat Type Push Nuts (2)	88-311-H	Rubber Boot (Rental Units Only)
88-172	Spacer Washers (2)	88-311-J	Barbed Adapter
88-190	Plastic Clutch Face Cover	88-311-K	Switch Guard
88-200	Clutch Assembly	88-311-M	Cable Tie (2)
88-201	Clutch Housing w/Set Screws	88-311-N	Strain Relief Nut
88-201-1	Clutch Housing w/Set Screws	GFI-20	20 ft. Power Cord w/GFCI
88-205	Drive Plate	G-CDC	Cable Drive Coupling w/"G" Connector for 5/8" Shaft
88-205-A	Round Socket Head Bolts 1" x 1/4" (6)	L-CDC	Cable Drive Coupling w/"L" Connector for 5/8" Shaft
88-210	Clutch Hub w/Roll Pin	7/8 L-CDC	Cable Drive Coupling for 6L78 7/8" Cables
88-215	Adjustment Nut	88-DECAL	Set of Safety Decals
88-215-A	Brass Slotted Head Screw 1/2" (2)	88-DVD	Instructional DVD
88-220	Friction Disc (2)		

# MODEL 88 SCHEMATIC DIAGRAM



**IMPORTANT: When ordering, give Serial Number of Machine.**