

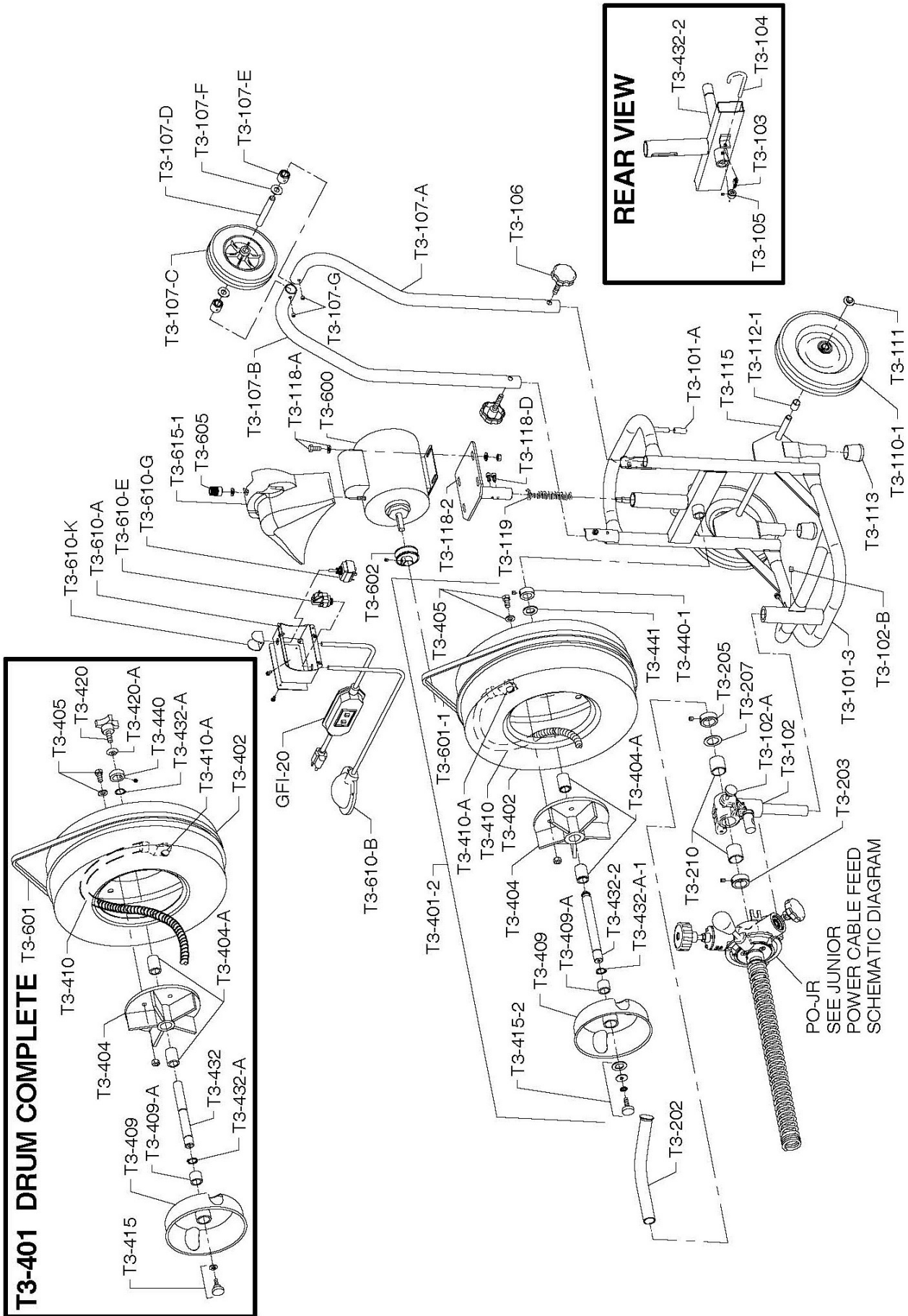
SEWEROOTER T-3 PARTS LIST

CAT. NO.	DESCRIPTION	CAT. NO.	DESCRIPTION
T3-100-3	Frame Complete (Passive Brake) 10" Wheel	T3-401	Drum Complete*
T3-101-3	Frame Only (for 10" Wheel w/Passive Brake)	T3-401-2	Drum Complete^
T3-101-A	Rubber Cord Wrap Tips (2)	T3-402	Drum Shell
T3-102	Distributor Tube Support Post & Clamp	T3-404	Drum Hub w/Bushings
T3-102-A	Post Locking Knob	T3-404-A	Hub Bushings (2)
T3-102-B	3/8" Set Screws (3)	T3-405	Hub Bolts, Nuts & Washers (5)
T3-102-C	Roll Pin	T3-409	Inner Drum Cage
T3-103	Spring	T3-409-A	Cage Bushing
T3-104	Shaft Retaining Pin	T3-410	Drum Connecting Cable
T3-105	Collar w/Set Screw	T3-410-A	Connecting Cable Bolt, Nut & Washer
T3-106	Handle Locking Knobs (2)	T3-415	Inner Drum Cage Retaining Knob w/Washer*
T3-107	Plated Handles	T3-415-2	Inner Drum Cage Retaining Knob w/Washers^
T3-107-A	Left Handle	T3-415-A	Washers^
T3-107-B	Right Handle	T3-420	Drum Retaining Knob w/Beveled Collar*
T3-107-C	Handle Wheel	T3-420-A	Rear Beveled Collar*
T3-107-D	Axle for Handle Wheel	T3-432	Drum Shaft*
T3-107-E	Bushings (2)	T3-432-2	Drum Shaft^
T3-107-F	Felt Washers (2)	T3-432-A	Shaft Retaining Ring*
T3-107-G	Set Screws (2)	T3-432-A-1	Shaft Retaining Ring (for Passive Brake Frame)
T3-110	8" Wheel w/Cap	T3-440	Front Beveled Collar w/Set Screw*
T3-110-1	10" Wheel w/Cap	T3-440-1	Spacer Collar w/Set Screw^
T3-111	Wheel Retainer Cap	T3-441	Wear Washer
T3-112	Wheel Retaining Spacer (for Brake Rod Frame) (3)	T3-600	Motor w/Foot Switch, Reverse Switch & GFCI
T3-112-1	Wheel Spacer (for Passive Brake Frame) (2)	T3-601	V-Belt 53" *
T3-113	Rubber Leg Tips (2)	T3-601-1	V-Belt 52" ^
T3-115	Axle	T3-602	V-Belt Pulley
T3-118	Motor Support w/Bolts, Nuts & Washers*	GFI-20	20' Power Cord w/GFCI
T3-118-1	Motor Support w/Bolts, Nuts & Washers^	T3-605	Belt Guard Knob
T3-118-2	Motor Support w/Bolts, Nuts & Washers (One Stem)^	T3-610	Foot Switch & Reverse Switch Assembly
T3-118-A	Motor Support Bolts, Nuts & Washers (4)	T3-610-A	Box Only w/Cover & Screws
T3-118-1-B	Bolt & Nut (for Two Stem Motor Support)	T3-610-B	Foot Pedal & Hose
T3-118-1-C	Bolt & Washer (for Two Stem Motor Support)	T3-610-C	Hose Clamp
T3-118-D	Guide Screws (2)^	T3-610-D	Foot Pedal Only
T3-119	Motor Support Spring	T3-610-E	Power Switch Diaphragm
T3-201	Distributor Tube Assembly	T3-610-F	Air Hose Only
T3-202	Distributor Tube Only	T3-610-G	Reverse Switch (3-Way)
T3-203	Front Collar w/Set Screw	T3-610-K	Switch Guard
T3-205	Rear Collar w/Set Screw	T3-610-N	Strain Relief Nut
T3-207	Thrust Bearing Race	T3-615-1	Belt Guard w/Slot for Stud
T3-210	Distributor Tube Bushings (2)	T3-GTE	Guide Tube Extension
		PO-JR	Junior Power Cable Feed
		T3-DECAL	Set of Safety Decals

* For T3-401 Style Drum

^For T3-401-2 Style Drum

SEWEROOTER T-3 SCHEMATIC DIAGRAM

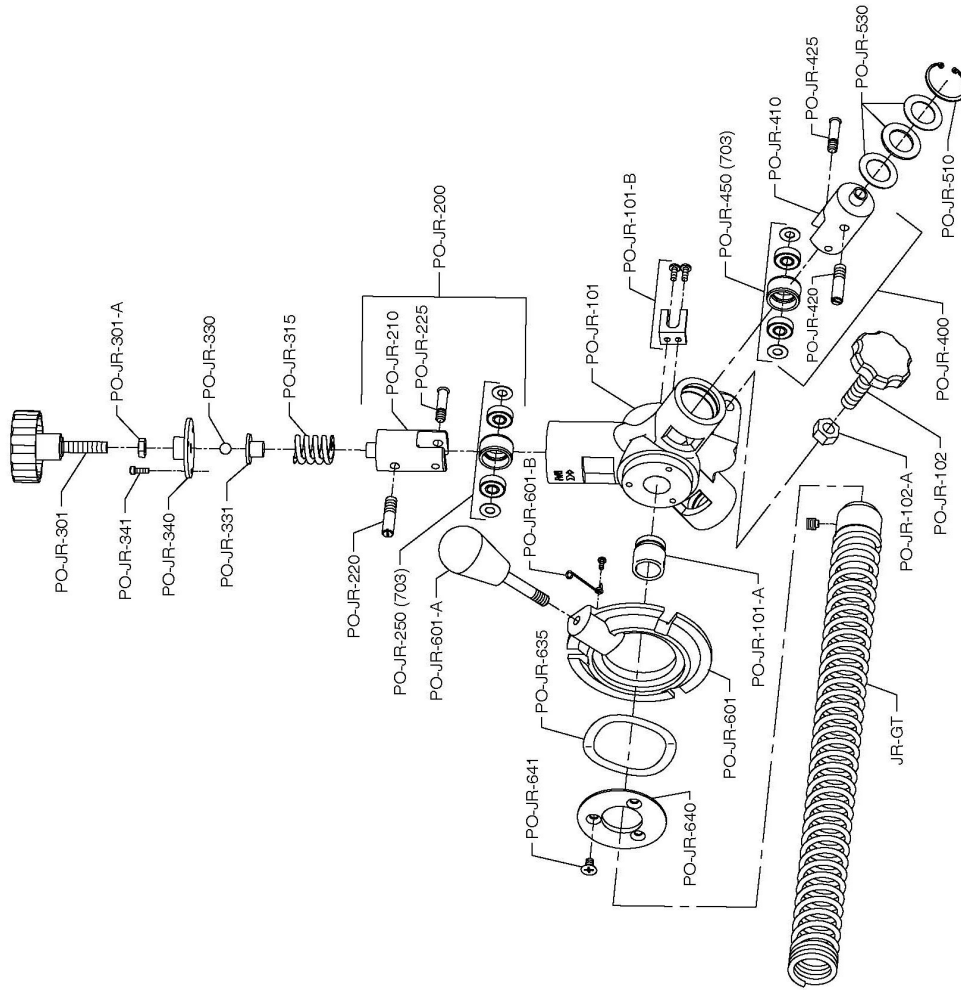


IMPORTANT: When ordering, give Serial Number of Machine.

JUNIOR POWER CABLE FEED PARTS LIST
for Sewerooter Junior & Sewerooter T-3

CAT. NO.	DESCRIPTION
PO-JR-GT	JR Power Feed & Guide Tube
PO-JR-101	Feed Body
PO-JR-101-A	Spout
PO-JR-101-B	Guide Clip
PO-JR-102	Knob
PO-JR-102-A	Limiting Nut
PO-JR-200	Top Roller Assembly
PO-JR-210	Top Carrier Only
PO-JR-220	Swing Pin
PO-JR-225	Feed roller Shaft
PO-JR-250	Feed Roller w/Bearing
PO-JR-301	Feed Pressure Knob
PO-JR-301-A	Limiting Nut
PO-JR-315	Pressure Spring
PO-JR-330	Ball Bearing
PO-JR-331	Ball Bearing Holder
PO-JR-340	Top Cover
PO-JR-341	Cover Screws (3)
PO-JR-400	Bottom Roller Assembly
PO-JR-410	Bottom Carrier Only
PO-JR-420	Swing Pin
PO-JR-425	Bottom Roller Shaft
PO-JR-450	Bottom Roller w/Bearing
PO-JR-510	Retaining Ring
PO-JR-530	Thrust Bearing & Races
PO-JR-601	Feed Control Disc w/Lever & Knob
PO-JR-601-A	Lever & Knob
PO-JR-601-B	Lifting Spring & Screw
PO-JR-635	Wave Washer
PO-JR-640	Feed Control Retaining Cover
PO-JR-641	Retaining Cover Screws (3)
PO-JR-703	Set of Rollers (3)
PO-JR-DECAL	Set of Safety Decals
JR-GT	Guide Tube for JR

POWER CABLE FEED JUNIOR SCHEMATIC DIAGRAM



IMPORTANT: When ordering, give Serial Number of Machine.

General Wire Spring Co,
1101 Thompson Avenue
McKees Rocks, PA 15136
412-771-6300 www.drainbrain.com