

# *Jet-Set*<sup>TM</sup>

*Slice through grease, sludge, sand and ice.*



**General**  
**PIPE CLEANERS**  
[www.drainbrain.com](http://www.drainbrain.com)

*The toughest tools down the line.<sup>TM</sup>*

# ***JM-1450 Electric Jet***

## ***Compact! Portable! Powerful!***

**G**eneral's water jets are ideal for clearing soft stoppages and ice from clogged drain lines. They use a stream of high pressure water that hits the stoppage and flushes it away. The thrust of the nozzle drives the hose down the line and gives you wall to wall cleaning action. You'll find plenty of uses for General's jetters – in restaurants, hotels, hospitals, shopping malls, factories, and septic systems.

General's Jet-Set™ gives you new weapons to use on some of your toughest stoppages.

**T**he powerful JM-1450 electric water jet gives you as much pressure as you can get from an electric jet. It generates 1500 psi at 1.7 gallons per minute, yet only pulls 13 amps. It's powered by a 1-1/2 hp dual capacitor enclosed motor with an in-line ground fault circuit interrupter.

The JM-1450 features Vibra-pulse® on demand to help the hose slide around tight bends in small lines. This unique feature allows the flow rate to remain the same whether Vibra-pulse is on or off.

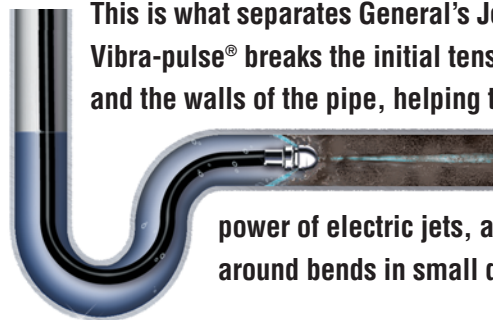
The JM-1450 is compact and portable. With an overall height of 34", the machine fits easily in the limited storage space of a contractor's truck. Need to be more compact? Simply remove the easily detachable hose reel and the height drops to just 14". The telescoping handle makes it easier to roll the machine to and from the job site.

A removable 150 ft. capacity hose reel with reel brake and swivel is mounted on a heavy duty frame with two 8" semi-pneumatic tires. Complete with tool box.

Standard safety features include a thermal relief valve to protect the pump from heat damage, along with a back flow check valve and inlet filter. An optional spray wand is available.



### ***Vibra-pulse®***



This is what separates General's Jet-Set from ordinary pressure washers. Vibra-pulse® breaks the initial tension between the surface of the hose and the walls of the pipe, helping the hose slide around tight bends and propels itself farther down the line. Vibra-pulse® increases the cleaning power of electric jets, and is particularly useful in jetting around bends in small drain lines.





### JM-1450 Specifications:

**Pump:**

Triplex w/Vibra-pulse®

**Pressure:**

1500 psi

**Flow:**

1.7 gpm

**Motor:**

1-1/2 hp 13 amp w/GFCI

**Reel Capacity:**

150 ft. x 1/4" hose

**Weight:**

111 lbs. (50 kg)

**Dimensions:**

28" L x 15" W x 34" H

(14" H w/o Reel)

(71 cm x 38 cm x 86 cm)



A convenient slide-out handle and eight inch wheels make it easy to roll the machine to and from the job.



The hose reel detaches in seconds, to make the jet more compact and portable.

# ***JM-2900 Gas Jet***

## ***Big machine power at a bargain price.***

**T**he JM-2900 is an economical alternative to larger gas jets. It's lighter and more maneuverable, yet maintains the same pressure and flow rate of its big brothers. It's driven by a 389 cc Honda engine connected directly to a 3000 psi, 4 gallon per minute triplex pump with Vibra-pulse® on demand.

The 200 ft. capacity hose reel with drag brake, reel lock, and swivel is mounted on a very maneuverable heavy duty frame with two pneumatic tires. A passive brake keeps the machine solidly positioned on the job.

Standard safety features include a thermal relief valve to protect the pump from heat damage, along with a back flow check valve and inlet filter. Complete with tool box. An optional spray wand is available.



### **JM-2900 Specifications:**

#### **Pump:**

Triplex w/Vibra-pulse®

#### **Pressure:**

3000 psi

#### **Flow:**

4 gpm

#### **Engine:**

389 cc w/Low oil shut off

#### **Hose Reel:**

Swivel, drag brake, and reel lock, 200 ft. x 3/8" hose capacity

#### **Weight:**

180 lbs. (82 kg)

#### **Dimensions:**

28" L x 28" W x 43" H  
(71 cm x 71 cm x 109 cm)





# JM-3000 Gas Jet

*Solid performance in the toughest conditions.*

**B**uilt to take heavy use and abuse, the powerful JM-3000 is great for clearing large lines and long runs. A heavy duty 3000 psi, 4 gpm triplex pump with Vibra-pulse® on demand is driven by a reliable 389 cc Honda engine with electric start through a 2 to 1 gear reducer to extend the life of the pump.

The JM-3000 is well balanced for easy handling. With little effort, you can tip the machine back on its rear wheels to more easily maneuver it into position.

A removable 300 ft. capacity hose reel with drag brake, reel lock, and swivel is mounted on the heavy duty frame with four 13" pneumatic tires. A wheel brake keeps the machine solidly positioned on the job.

Standard safety features include a thermal relief valve to protect the pump from heat damage, along with a back flow check valve and inlet filter. Complete with tool box, chemical injector, and spray wand with trigger.



## JM-3000 Specifications:

### Pump:

Triplex w/Vibra-pulse®

### Pressure:

3000 psi

### Flow:

4 gpm

### Engine:

389 cc w/Low oil shut off, electric start, and gear reducer

### Hose Reel:

Removable, swivel, drag brake, and reel lock, 300 ft. x 3/8" hose capacity

### Weight:

291 lbs. (132 kg)

### Dimensions:

43" L x 29" W x 49" H  
(109 cm x 74 cm x 124 cm)

# JM-3055 Gas Jet

*The most flow you can get without a holding tank.*

**T**he JM-3055 has the power to clear your most stubborn stoppages, including grease, sand and ice. Its 3000 psi, 5.5 gpm triplex pump has the thrust to pull the hose down long runs, the pressure to cut through tough stoppages, and the flow to flush them away. In fact, the JM-3055 has the highest flow rate available without requiring a holding tank. It's driven by a 480 cc Briggs and Stratton Vanguard engine with electric start. The pump features Vibra-pulse® on demand to help the hose slide around tight bends and down long runs.

The JM-3055 is well balanced so that with little effort, the machine can be tipped back on its rear wheels to more easily maneuver it into position. A removable 300 ft. capacity hose reel with drag brake, reel lock, and swivel is mounted on a heavy duty frame with four 13" pneumatic tires. A wheel brake keeps the machine solidly positioned on the job.



Standard safety features include a thermal relief valve to protect the pump from heat damage, along with a back flow check valve and inlet filter. Complete with tool box, chemical injector, and spray wand with trigger.

## JM-3055 Specifications:

### Pump:

Triplex w/Vibra-pulse®

### Pressure:

3000 psi

### Flow:

5.5 gpm

### Engine:

480 cc w/Low oil shut off, electric start, and gear reducer

### Hose Reel:

Removable, swivel, drag brake, and reel lock, 300 ft. x 3/8" hose capacity

### Weight:

299 lbs. (135 kg)

### Dimensions:

43" L x 29" W x 49" H  
(109 cm x 73 cm x 124 cm)



# JM-3080 Gas Jet

*Get high water flow without a trailer.*

**T**he JM-3080 gives you the increased cleaning power of 8 gpm without risking pump damage if your water supply can't match the pump demand. A 12 gallon buffer tank gives you the safety margin you need when using a high flow water jet to clear larger and more difficult lines. A 614 cc Honda engine with electric start drives a 3000 psi pump through a 2 to 1 gear reducer. The pump features Vibra-pulse® on demand, to help propel the hose on long runs and around tight bends.

Surprisingly agile for a machine of its size, the JM-3080 is precisely balanced so that with little effort, the machine can be tipped back on its rear wheels to more easily maneuver it into position. A removable 300 ft. capacity hose reel with drag brake, reel lock, and swivel is mounted on a heavy duty frame with four 13" pneumatic tires. A wheel brake keeps the machine solidly positioned on the job.



Standard safety features include a thermal relief valve to protect the pump from heat damage, along with a back flow check valve and inlet filter. Complete with tool box, chemical injector, and spray wand with trigger.



## JM-3080 Specifications:

### Pump:

Triplex w/Vibra-pulse®

### Pressure:

3000 psi

### Flow:

8 gpm

### Engine:

614 cc w/Low oil shut off, electric start, and gear reducer

### Hose Reel:

Removable, swivel, drag brake, and reel lock, 300 ft. x 3/8" hose capacity

### Weight:

375 lbs. (170 kg)

### Dimensions:

43" L x 29" W x 56" H  
(109 cm x 74 cm x 142 cm)

# JM-2512 Typhoon™

*Big cleaning power in a tough new package.*



**T**he JM-2512 Typhoon™ trailer jet is ideal for clearing big lines or remote jobs far from a water source. Twelve gallons of water pulsates down the line every minute at a powerful 2500 psi to blast lines clear of grease, sediment, and debris. The 200 gallon holding tank carries enough water to handle remote applications where access to water is limited.

A 690 cc Honda engine with electric start powers the 2500 psi, 12 gpm pump with Vibra-pulse® through a V-belt reducer. Two hose reels – an electric rewind jet hose reel with 400 ft. x 1/2" capacity featuring a variable speed controller, and a supply hose reel carrying 150 ft. x 3/4" hose – are mounted at the rear of the unit next to the pressure gauge and output valve. Engine controls, including an hour meter, are mounted within easy reach in the lockable toolbox with slide action doors just below the reels.

The Typhoon is mounted on a heavy duty trailer rated for 3500 lbs. per axle with bearing buddies, and rides on 15" radial tires with modular wheels. A splash guard at the front protects the pump

and engine from road debris. The body is protected by a durable powder-coated epoxy finish for added weather protection.

Standard safety features include electric brakes, safety strobe light, three safety cones with holder, rear fold down stabilizer jacks, and retractable guide arm. An anti-freeze system protects the unit from freeze damage. Complete with spray wand and trigger.



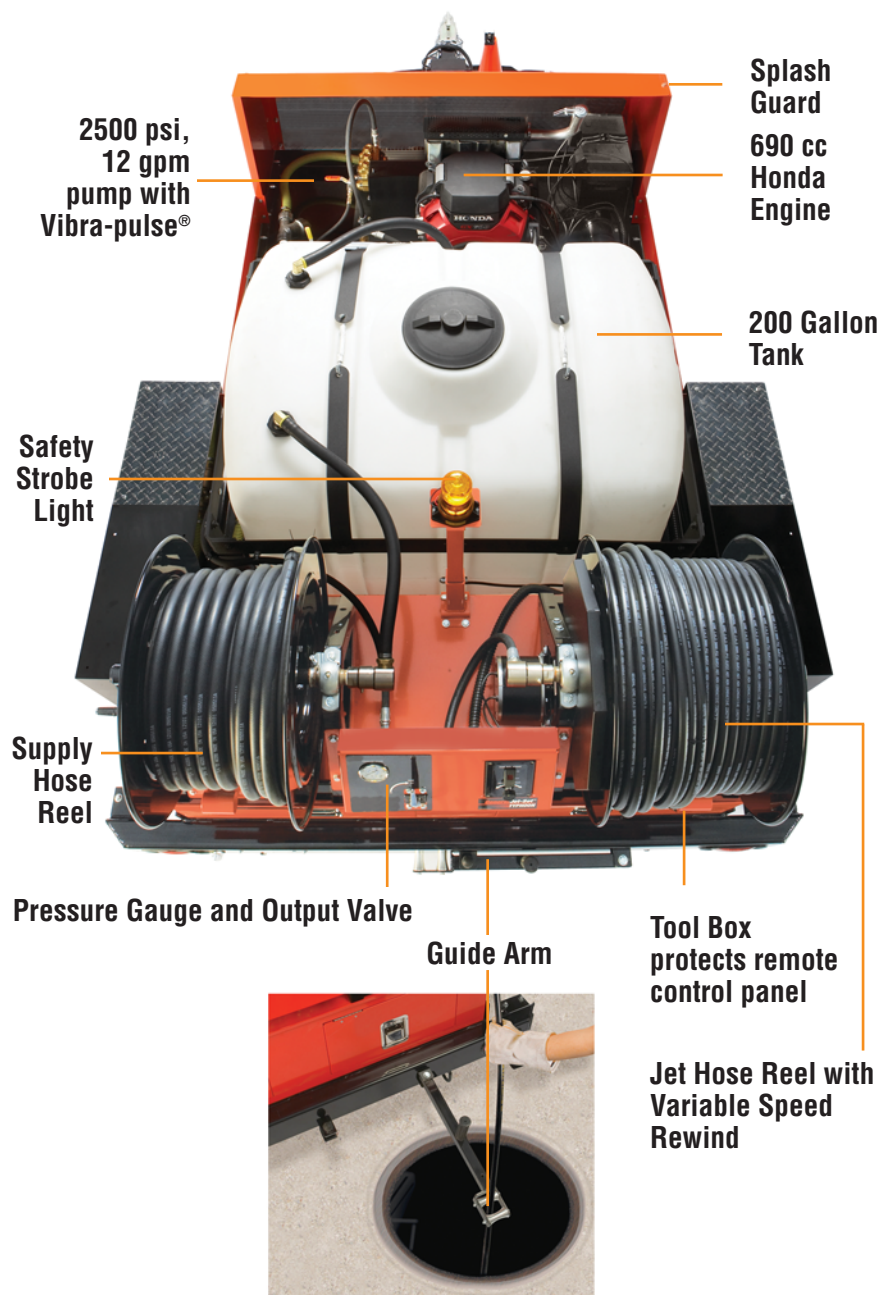
**Remote control panel protected inside locked toolbox.**



**Easily accessible Variable Speed rewind control, along with pressure gauge and output valve mounted between hose reels.**







## JM-2512 Typhoon™ Specifications:

**Pump:**  
Triplex w/Vibra-pulse®

**Pressure:**  
2500 psi

**Flow:**  
12 gpm

**Engine:**  
690 cc Honda w/Low oil shut off, electric start, and V-belt reducer

**Tank Capacity:**  
200 Gallons

**Jet Hose Reel:**  
Electric variable speed rewind, swivel, 400 ft. x 1/2" hose capacity

**Supply Hose Reel:**  
Manual, swivel, drag brake, and reel lock, 150 ft. x 3/4" capacity

**Safety Features:**  
Electric brakes, safety strobe light, three safety cones with holder, rear fold down stabilizer jacks, and retractable guide arm

**Weight:**  
1900 lbs. Empty; 3300 lbs. Loaded

**Trailer Dimensions:**  
153" L x 82" W x 65" H  
(388 cm x 208 cm x 165 cm)

## High Performance Nozzles

The Typhoon's™ High Performance Nozzles incorporate patented fluid mechanics that significantly increase thrust, pulling power, and cleaning power without needing to increase water flow or pressure.



# Jet-Set Accessories



## CM-300 Cart-Reel

The optional Cart-Reel™ is a must for professionals. It lets you use the power of the gas jet in buildings and confined spaces where exhaust fumes could be hazardous, while the gas jet stays safely outside. The Cart-Reel comes with two pneumatic tires, 300 ft capacity hose reel, reel brake, gauge, and a shut-off valve.

## HM-200-W Handy-Reel with Foot Pedal

For use with any jet, the compact 200 ft. capacity Handy-Reel can be attached to a gas jet so you can use the power of the gas jet inside a building. Or it can be taken up on a roof to clear vents while your jet sits securely on the ground. The foot pedal gives you added safety. Water flows when you step on the pedal and stops when you lift your foot, so you have both hands free at all times to control the hose. The foot pedal is also available separately.



## Spray Wands

Get a spray wand and use your jet for high pressure washing and cleaning applications.

Spray wands are made from durable components. The triggers have a light touch, yet can withstand rough usage. The wands are insulated and designed for use with a down stream soap injector. A variety of stainless steel nozzles are available.

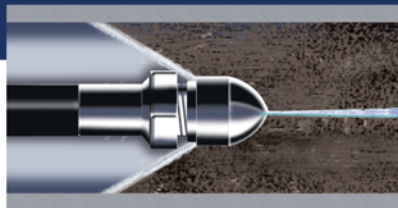




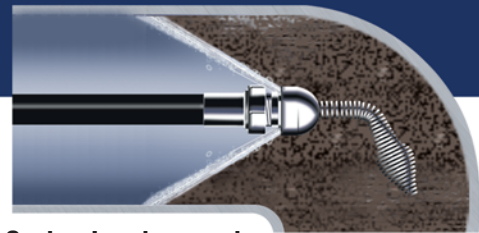
# Jet-Set Nozzles and Hoses

## Nozzles

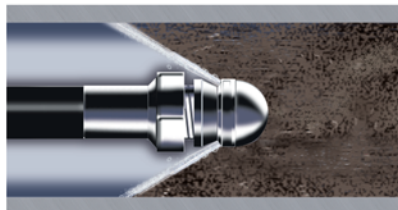
Whether you're up against grease, sand, or ice, there's a General nozzle that will cut through it. Some are designed for maximum penetrating power, some are designed to pressure wash the pipe walls, and some are designed to go around sharp bends. All of General's nozzles are made of hardened stainless steel to last longer.



**Powerful penetrating nozzle cuts through grease and ice.**



**Spring Leader nozzle helps guide hose around tight bends and P-traps.**



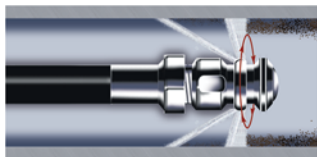
**Wide spray flushing nozzle cleans inside of pipe thoroughly.**



**Downhead nozzle takes hose down Tee's and around difficult corners.**

## Rotary Nozzles

Make sure you leave the lines crystal clear with General's rotary nozzles.

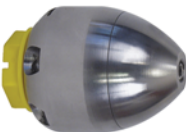


**Rotary nozzles scour wall of pipe crystal clear.**

The JN-RB heavy duty hardened stainless steel rotary nozzles have two 90 degree jets to scour the walls of the pipe, and two 35 degree jets to drive the hose down the line. The less expensive JN-RA hardened steel rotary nozzles have two 45 degree jets for combined thrust and cleaning action.

## High Performance Nozzles

General's High Performance Nozzles incorporate patented fluid mechanics that significantly increase thrust, pulling power, and cleaning power without needing to increase water flow or pressure. These nozzles are custom machined to redirect the water through highly efficient inner surface channels directed toward each orifice. The nozzles have replaceable threaded inserts at each orifice, so when the nozzle wears, you only have to replace the inserts, not the whole nozzle.



## Chain Saw Nozzle

Rip through roots with the Chain Saw Nozzle. Lengths of chain can quickly and easily be switched for different diameter pipes. Spins at up to 10,000 RPM.

- 1/2" nozzle works well in combination the 12 gpm Typhoon trailer jet to clear 4", 6", 8", and 10" lines.
- 3/8" nozzle is available in 4, 5.5, and 8 gpm models to clear 4", 6", and 8" lines.



## Hoses

Tough high pressure jetting hose comes in a variety of lengths and diameters. Use the 1/2" ID hose for main lines and long runs at distances up to 400 ft. Use the 3/8" ID hose for clean outs, 4" through 8" floor drains, and septic lines at distances up to 300 ft. With the 1/4" ID hose, you can clear 2" through 4" lines up to 200 ft. away. And the Super-Flex™ 1/8" hose has the flexibility to get through 1-1/2" and 2" lines and bends up to 75 ft. down the line.



# Jet-Set specifications

	JM-1450 Electric Jet	JM-2900 Gas Jet	JM-3000 Gas Jet	JM-3055 Gas Jet	JM-3080 Gas Jet	JM-2512 Trailer Jet
<b>Weight (Without Hose)</b>	111 lbs. 50 kg	180 lbs. 82 kg	291 lbs. 132 kg	299 lbs. 135 kg	375 lbs. 170 kg	1900 lbs. (Empty) 3300 lbs. (Loaded)
<b>Dimensions Length</b>	28" 71 cm	28" 71 cm	43" 109 cm	43" 109 cm	43" 109 cm	153" 388 cm
<b>Dimensions Width</b>	15" 38 cm	28" 71 cm	29" 74 cm	29" 74 cm	29" 74 cm	82" 208 cm
<b>Dimensions Height</b>	34" 86 cm	43" 109 cm	49" 124 cm	49" 124 cm	56" 142 cm	65" 165 cm
<b>Motor/Engine</b>	1.5 hp	389 cc	389 cc	480 cc	614 cc	690 cc
<b>Electric Start</b>	N/A	No	Yes	Yes	Yes	Yes
<b>Pump</b>	Triplex	Triplex	Triplex	Triplex	Triplex	Triplex
<b>Pressure Flow</b>	1500 psi 1.7 gpm	3000 psi 4 gpm	3000 psi 4 gpm	3000 psi 5.5 gpm	3000 psi 8 gpm	2500 psi 12 gpm
<b>Vibra-pulse®</b>	Yes	Yes	Yes	Yes	Yes	Yes
<b>Removable Hose Reel</b>	Yes	No	Yes	Yes	Yes	No
<b>Hose Reel Capacity</b>	150 ft. x 1/4"	200 ft. x 3/8"	300 ft. x 3/8"	300 ft. x 3/8"	300 ft. x 3/8"	400 ft. x 1/2"
<b>Inlet Filter</b>	Yes	Yes	Yes	Yes	Yes	Yes
<b>Backflow Check Valve</b>	Yes	Yes	Yes	Yes	Yes	Yes
<b>Thermal Relief Valve</b>	Yes	Yes	Yes	Yes	Yes	Yes
<b>Spray Wand &amp; Chemical Injector</b>	Optional	Optional	Standard	Standard	Standard	Standard
<b>Metal Tool Box</b>	Yes	Yes	Yes	Yes	Yes	Yes
<b>Pneumatic Tires</b>	Two*	Two	Four	Four	Four	Two**

\* Semi-Pneumatic  
\*\* Radial

**General** *General Wire Spring Co.*  
**PIPE CLEANERS**  
 McKees Rocks, PA 15136 USA  
 412-771-6300 Fax: 412-771-2771  
 Web Site: [www.drainbrain.com](http://www.drainbrain.com)  
**www.drainbrain.com**  
 ★ MADE IN USA ★